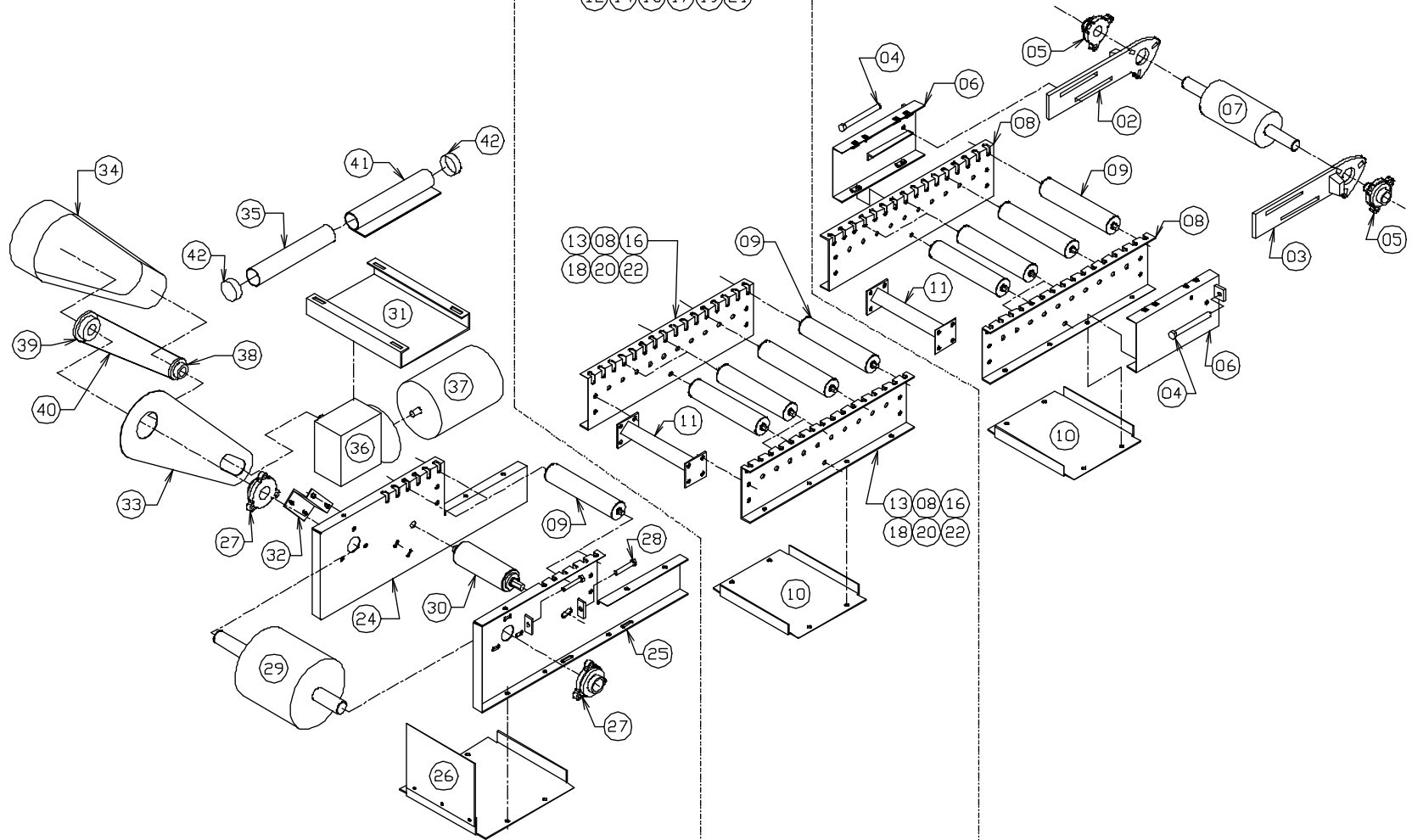


Replacement Parts List for Model # 640

DRIVE (23)
COMPLETED BOLTED ASSEMBLY

INTERMEDIATE
COMPLETED BOLTED ASSEMBLY
(12)(14)(15)(17)(19)(21)

INFEED (01)
COMPLETED BOLTED ASSEMBLY



PN Description

- | | | | | |
|-----------------------------------|----------------------------------|------------------------------------|--------------------------|----------------------|
| 1 Take-up Section Assembly | 9 • Deck Roller Assembly | 19 84" Intermediate Section Assy | 29 • Drive Pulley | 39 • Drive Sprocket |
| 2 • Right Side Take-up Bar | 10 • Bottom Spreader | 20 84" Intermediate Frame Side | 30 Snub Roller/Hex Shaft | 40 • Chain |
| 3 • Left Side Take-up Bar | 11 Spreader Weldment | 21 120" Intermediate Section Assy | 31 • Motor Base | 41 • Manual |
| 4 • 1/2" x 6" Take-up Bolt | 12 6" Intermediate Section Assy | 22 120" Intermediate Frame Side | 32 • 2" High "Z" Bracket | 42 • Manual Tube Cap |
| 5 • 1 3/16" 3 Bolt Flange Bearing | 13 6" Intermediate Frame Side | 23 Drive Section Assembly | 33 Guard Back | |
| 6 • Take-up Pocket Weldment | 14 12" Intermediate Section Assy | 24 Motor Side Drive Frame | 34 Guard Weldment | |
| 7 • Infeed Pulley | 15 12" Intermediate Frame Side | 25 Non-Motor Side Drive Frame | 35 Manual Tube | |
| 8 • 24" Intermediate Frame Side | 16 24" Intermediate Section Assy | 26 Drive Pulley Guard | 36 Motor | |
| | 17 48" Intermediate Section Assy | 27 • 1 7/16" 3 Bolt Flange Bearing | 37 Reducer | |
| | 18 48" Intermediate Frame Side | 28 • 3/8" x 2 1/2" Push Bolt | 38 • Driven Sprocket | |

• Recommended spare parts to be stocked at your location