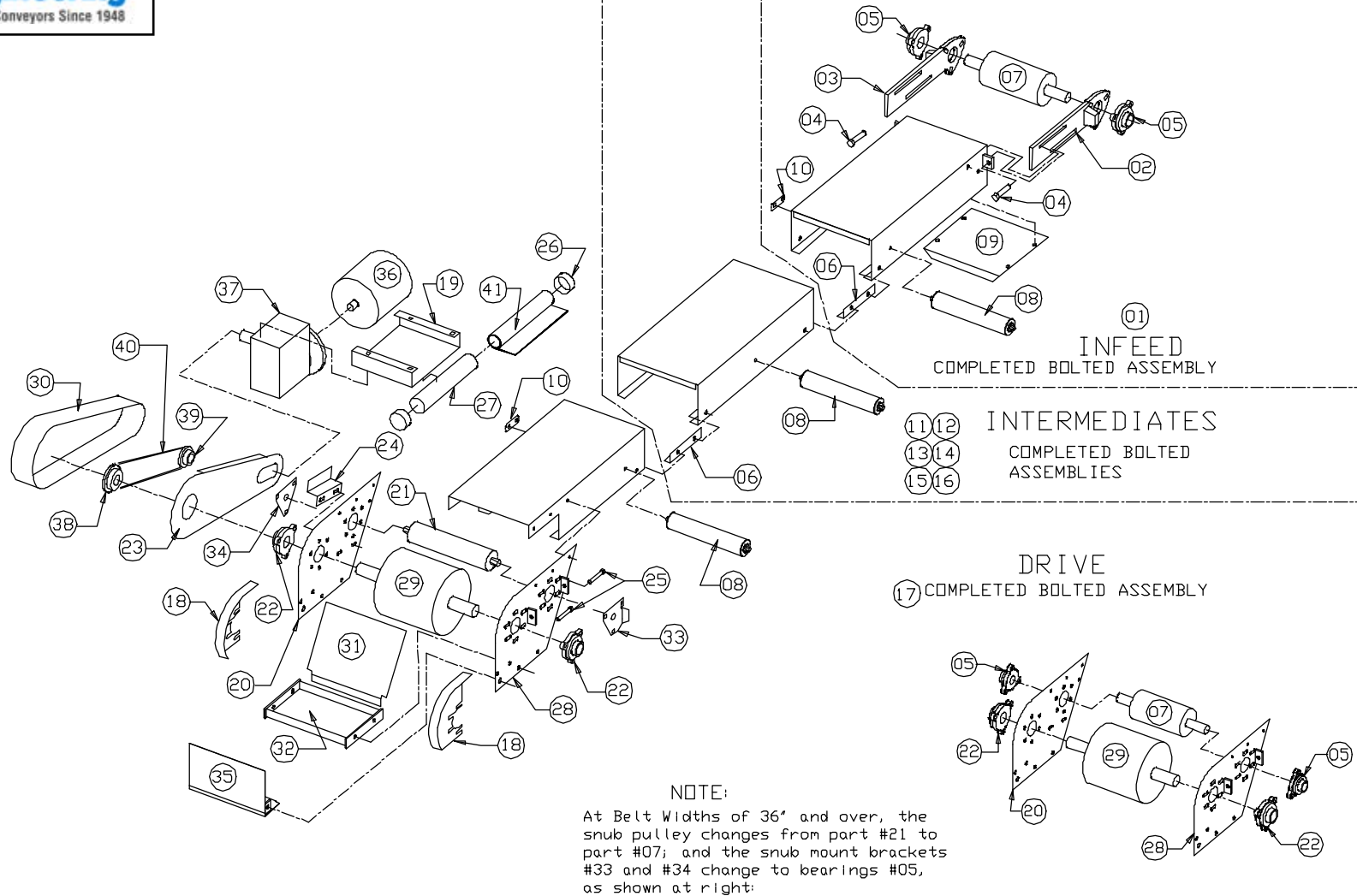
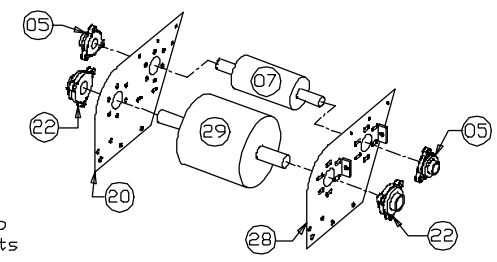


## Replacement Parts List for Model # 220 and Model # 221



**NOTE:**  
At Belt Widths of 36" and over, the snub pulley changes from part #21 to part #07; and the snub mount brackets #33 and #34 change to bearings #05, as shown at right:

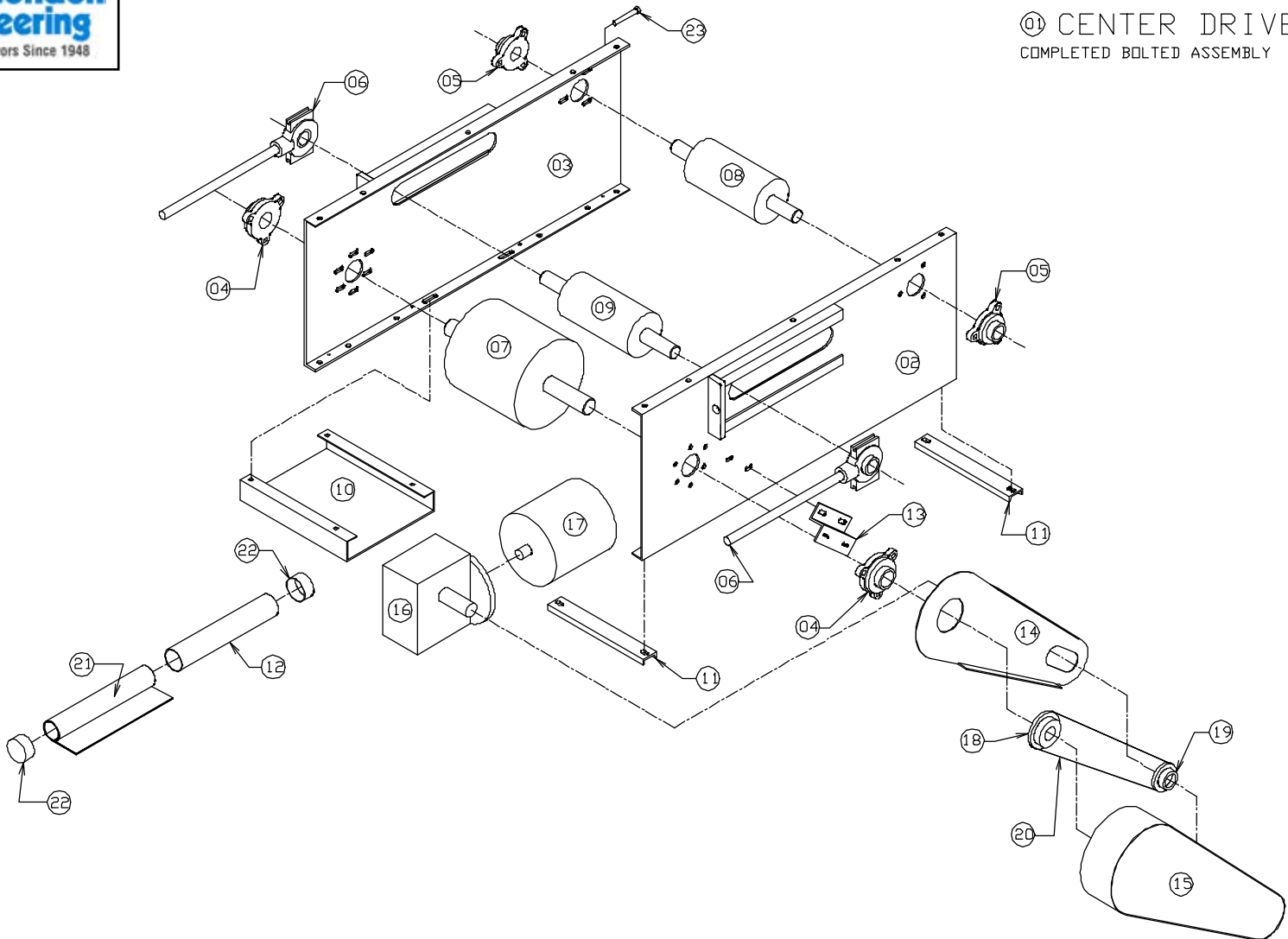


PN Description				
1 Infeed Section Assy	(4" dia CF x 1 3/16")	16 120" Intermediate Sect Assy	25 3/8" x 2 1/2" Push Bolt	35 Drive Pulley Guard
2 • Left Hand Take-up Bar	8 • Return Roller/Hex Shaft	17 Drive Section Assy	26 Manual Tube Weldment/Cap	36 • Motor
3 • Right Hand Take-up Bar	(2" x 7/16")	18 End Pulley Guard	28 Left Drive Plate Weldment	37 • Reducer
4 • 1/2" x 6" Take-up Bolt	9 Infeed Reinforcement Plate	19 Motor Base	29 Drive Pulley	38 • Drive Sprocket
5 • 1 3/16" 3 Bolt Flange Bearing	10 Adjustment Bracket	20 Right Drive Plate Weldment	(9" dia CFRL x 1 7/16")	39 • Driven Sprocket
6 Splice Link Angle	11 6" Intermediate Section Assy	21 • Snub Roller/Hex Shaft	30 Guard Weldment	40 • Chain
7 • Infeed Pulley	12 12" Intermediate Sect Assy	(2 1/2" dia x 11/16")	31 Snub Guard	41 Manual
	13 24" Intermediate Sect Assy	22 1 7/16" 3 Bolt Flange Bearing	32 Crossmember Weldment	
	14 48" Intermediate Sect Assy	23 Guard Back	33 Left Hand Adaptor Bracket	
	15 84" Intermediate Sect Assy	24 Drive Guard Bracket	34 Right Hand Adaptor Bracket	
				<b>• Recommended spare parts to be stocked at your location</b>



**Replacement Parts List for Model # 220 and Model # 221 Center Drive**

01 CENTER DRIVE  
COMPLETED BOLTED ASSEMBLY



PN Description			
1 Center Drive & Take-up Section Assembly	5 • 1 3/16" 3 Bolt Flange Bearing	10 Motor Base	19 • Drive Sprocket
2 Motor Side Drive Plate	6 • Take-up Bearing Assembly (9" dia CFRL x 1 7/16")	11 Channel Spreader	20 • Chain
3 Non-Motor Side Drive Plate	7 • Drive Pulley	12 Manual Tube	21 Manual
4 • 1 7/16" 3 Bolt Flange Bearing	8 • Snub Roller/Hex Shaft (4" dia x 1 3/16")	13 "Z" Bracket	22 Manual Tube Cap
	9 • Take-up Pulley (4" dia CF x 1 3/16")	14 Guard Back	23 Take-up Bolt
		15 Guard Weldment	
		16 • Reducer	
		17 • Motor	
		18 • Driven Sprocket	
			• Recommended spare parts to be stocked at your location