

CHAIN-DRIVEN LIVE ROLLER CONVEYOR

Industrial, heavy-duty conveyor with a variety of drive and height configurations designed to handle large-item loads up to 2,000 pounds per lineal foot of conveyor.

1700 Division Street, New London, WI 54961

Phone: (920) 982-4030; Fax: (920) 982-6800

Website: www.nleco.com

Effective Widths: 12", 18", 24", 30", 36", 42", 48", 54" and 60"; (Custom Widths Available)

Lengths: 5' – 50'

Standard Speed: 30 FPM

Standard Motor: 1 1/2 HP 230/460/3/60 TEFC

Standard Drive: Bottom Mount Center, Right Side

Frame: 8 1/2" Deep x Formed 1/4" Steel

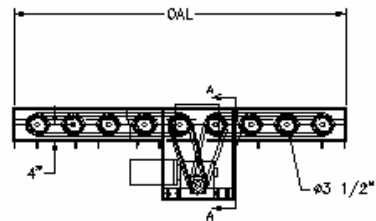
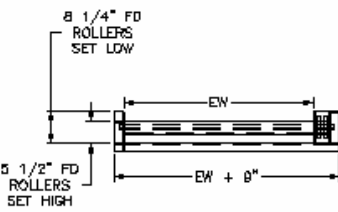
Bearings: Grease Sealed

Roller Chain: #60 Roll-to-Roll, Progressive Drive Roller Chain

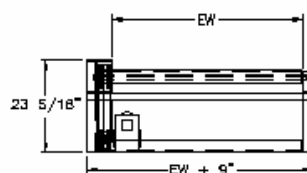
Standard Rollers: 3 1/2" Dia., .300 Wall with 1-1/16" Hex Shaft

Roller Centers: 6", 9", 12", 15"

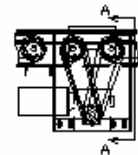
Standard Supports: 30" Top of Roller



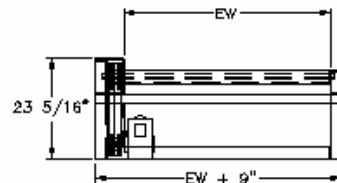
BOTTOM DRIVE



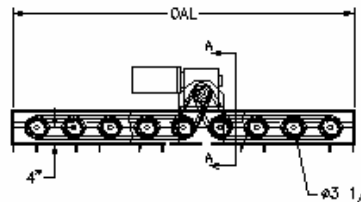
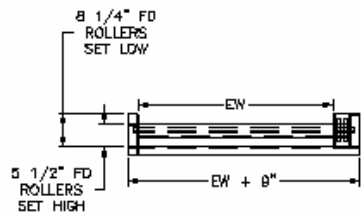
DRIVE VIEW A-A



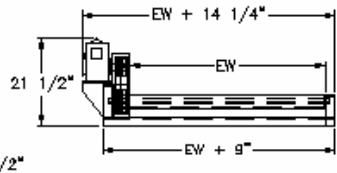
BOTTOM DRIVE



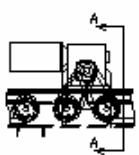
DRIVE VIEW A-A



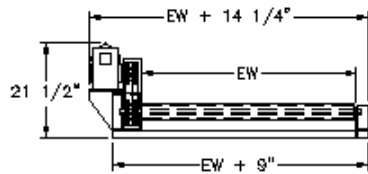
SIDE MOUNT DRIVE



DRIVE VIEW A-A



SIDE MOUNT DRIVE



DRIVE VIEW A-A