

## STANDARD DUTY V-GUIDED CONVEYOR TYPE II, III & IV CONVEYOR (V-GUIDED M521)

This unit is designed to convey unboxed, loose products like plastic parts and stampings and for conveying bulk products like sludge or sand. It features a low profile infeed and small hold down wheels for easy placement under existing machines. The frame and pulleys are grooved/notched to provide a track for the rubber vulcanized belt. This "guided" system keeps the belt centered for side loading, long run and short but wide applications

**Effective Widths:** 5" – 27"

**Curves:** 30 Degree; 45 Degree Incline

**Standard Motor:** 1/3 HP 230/460/3/60 TEFC

**Standard Drive:** Top Mount, Right Side

**Standard Belt:** Black PVC 120 with 1 1/2" high cleats on 12" centers A – Section V- Guided, Clipper Lacing

**Drive Pulley:** 4" Dia Flat Face Rubber Lagged x 1-3/16" x A Section V-Guided

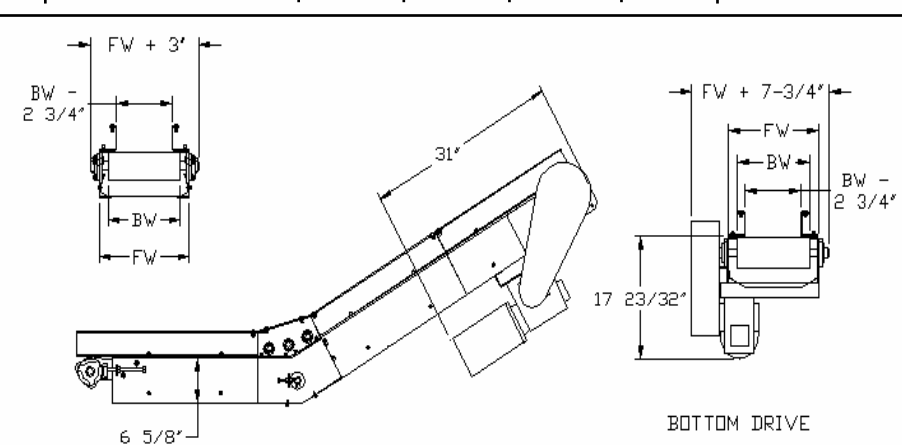
**Infeed Pulley:** 4" Dia Crown Face Take Up x 1-3/16" x A Section V-Guided

**Frame:** 6 5/8" Deep x 12 Gauge

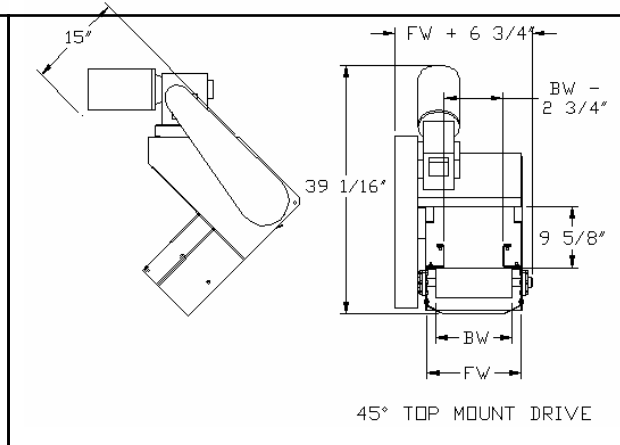
**Standard Side rails:** 1 1/2" or 3 1/2" High

**Standard Speed:** 30 FPM

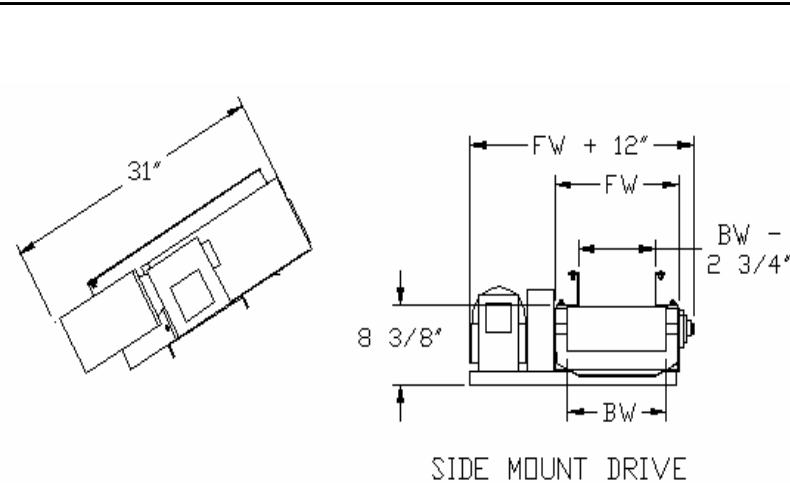
BELT WIDTH	8"	12"	18"	24"
FRAME WIDTH:	11"	15"	21 1/2"	28"
EFFECTIVE WIDTH:	5"	9"	15"	21"



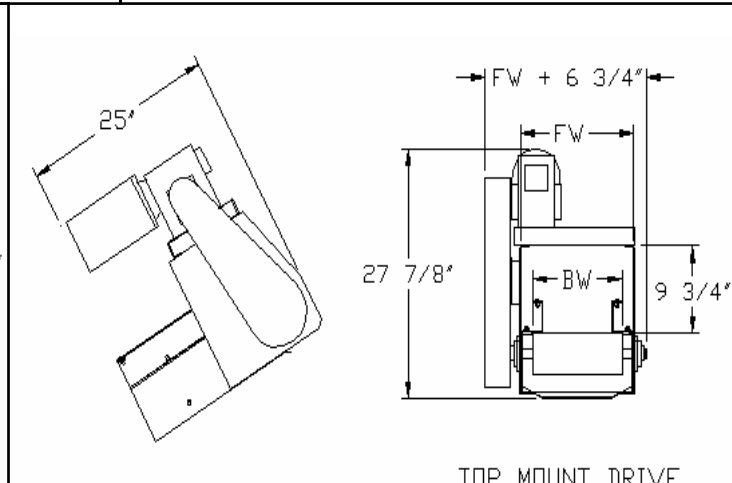
BOTTOM DRIVE



45° TOP MOUNT DRIVE



SIDE MOUNT DRIVE



TOP MOUNT DRIVE